

## **Board of Trustees Agenda Item**

**Board Meeting Date:** August 6, 2012

**Title of Item:** Project Presentation for Fine Arts Scene Shop and Print Shop & Plant Services Facility

### **Background and Analysis:**

On March 5, 2012 the Board of Trustees approved the creation of two Measure C projects to replace Project #115, FAPPS (Fine Arts, Print Shop & Plant Services). The two projects are #115, Fine Arts Scene Shop and #173, Print Shop & Plant Services Facility.

The conceptual design for the projects will be presented.

**Recommendation:** Executive Director of Facilities, Operations and Construction Management Charles Allen recommends that the Board approve the designs presented, to allow detailed design to proceed.

Submitted by:	Charles Allen x6150
Additional contact names:	Art Heinrich x6295, Shirley Treanor, x7364
Is backup provided?	Yes

# Foothill College Fine Arts Scene Shop

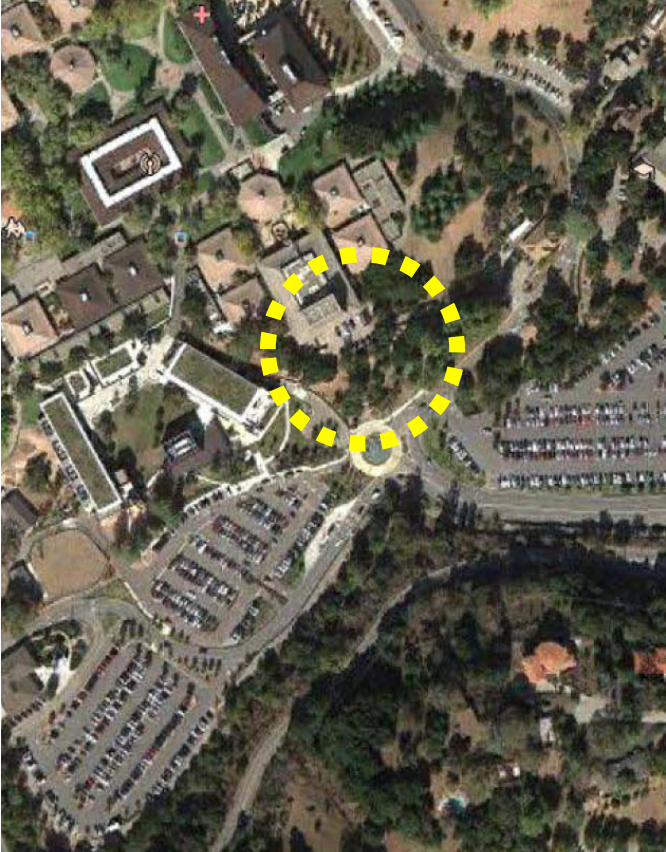
Board of Trustees Presentation

August 6, 2012



FOOTHILL COLLEGE

# FOOTHILL COLLEGE FINE ARTS SCENE SHOP



## CLIENT

- District Facilities & Operations
- Fine Arts Scene Shop Staff

## PROGRAM MANAGER

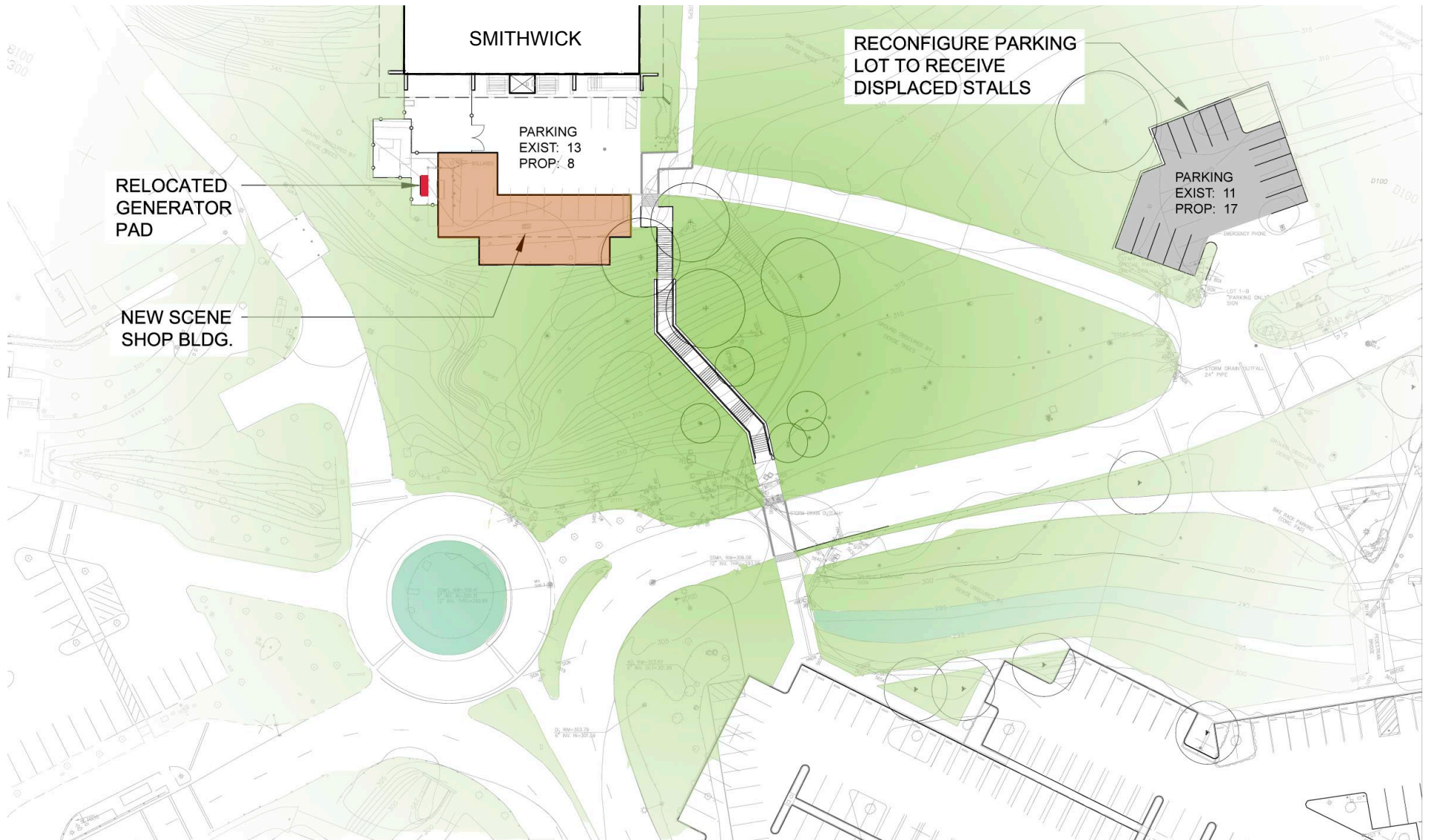
- Gilbane/MAAS

## A/E TEAM

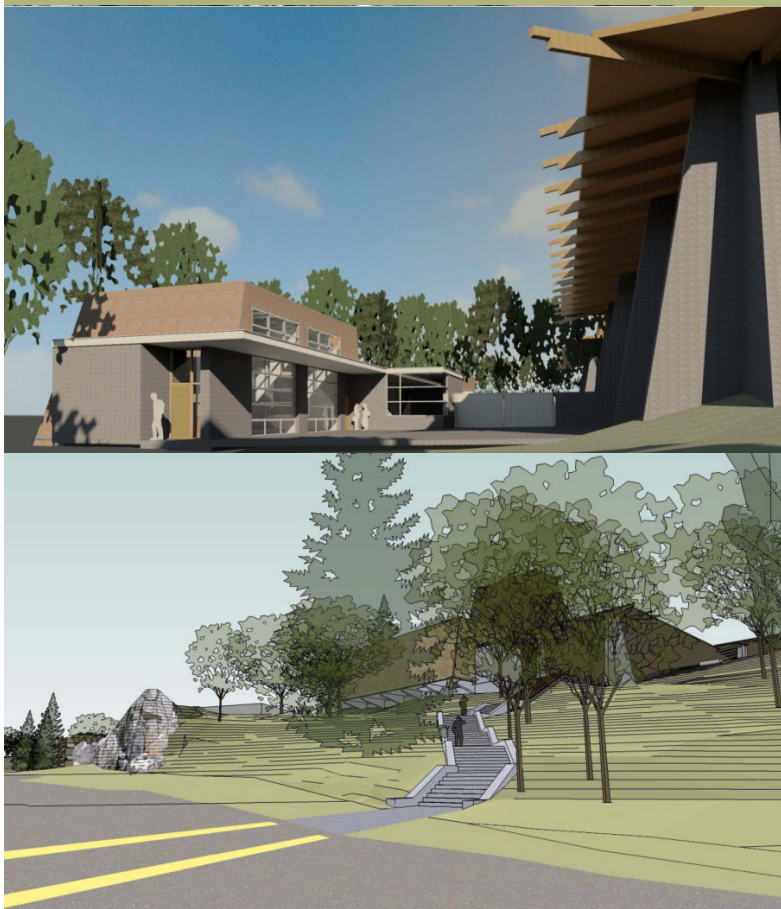
- WRNS Studio, Architectural
- Sandis, Civil
- Meyer + Silberberg, Landscape
- Crosby Group, Structural
- Interface, MEP
- SFMI, IT/Telecom



# Foothill College Fine Arts Scene Shop







## GOALS & OBJECTIVES

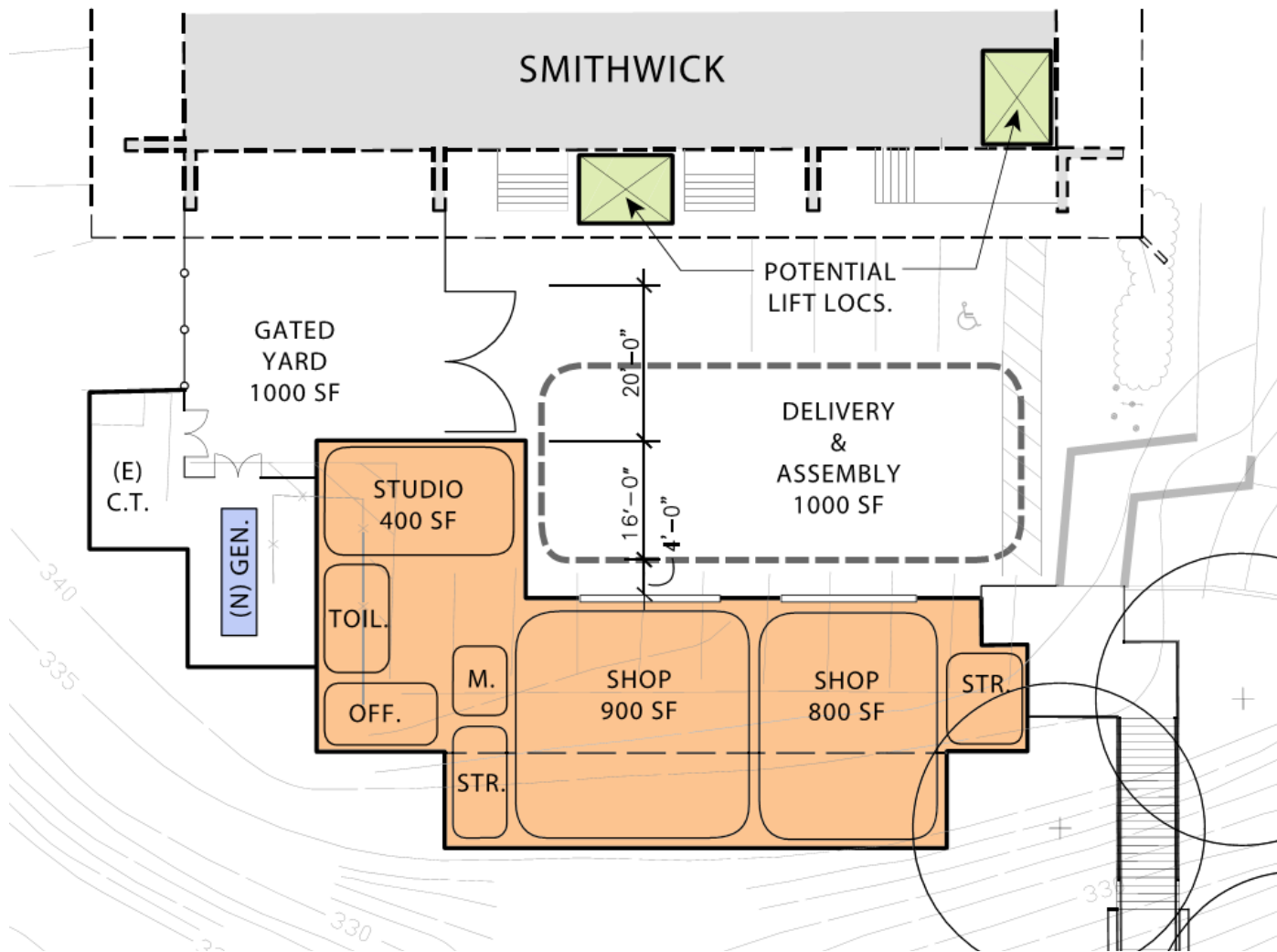
### SCENE SHOP

- Maximize efficiency of shop operations
- Provide direct access from Smithwick Theater storage and work shop areas
- Provide a visual screen of service yard, emergency generator, and cooling plant

### DESIGN OBJECTIVES

- Provide a new facility that resides in harmony with the adjacent campus context by using a familiar form and material palette
- Enhance aesthetic and functional relationships with Smithwick Theater and campus circulation

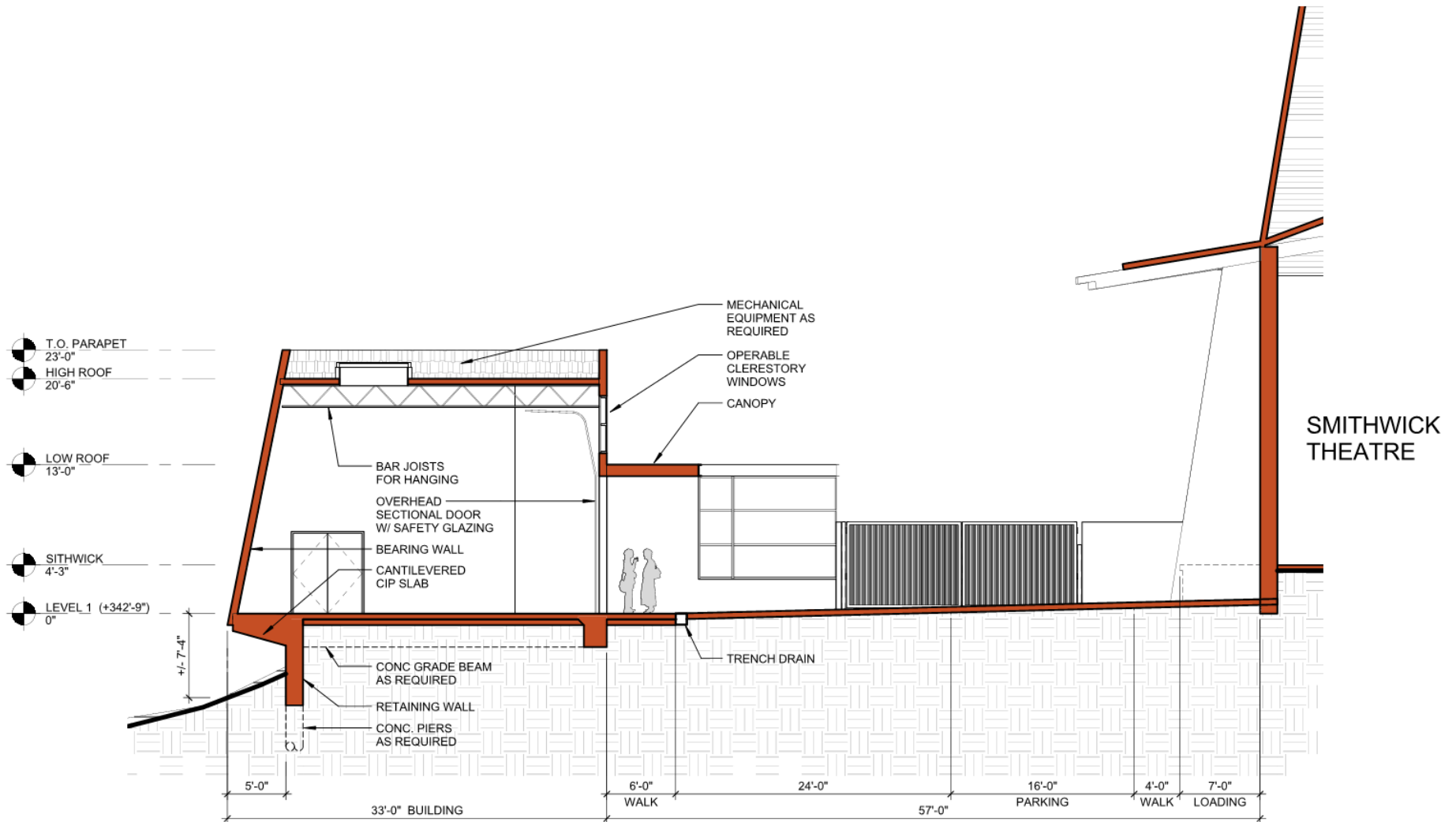
# Foothill College Fine Arts Scene Shop



## AREA SUMMARY

SHOP	800
SHOP	900
STUDIO	400
OFFICE	150
STORAGE	200
STORAGE	150
TOILETS	200
MECHANICAL	100
CIRCULATION	200
TOTAL ENCLOSED =	3100 SF
OUTDOOR ASSEMBLY	1000
GRAND TOTAL =	4100 SF

# Foothill College Fine Arts Scene Shop





## Foothill College Fine Arts Scene Shop



Perspective View

7 of 10

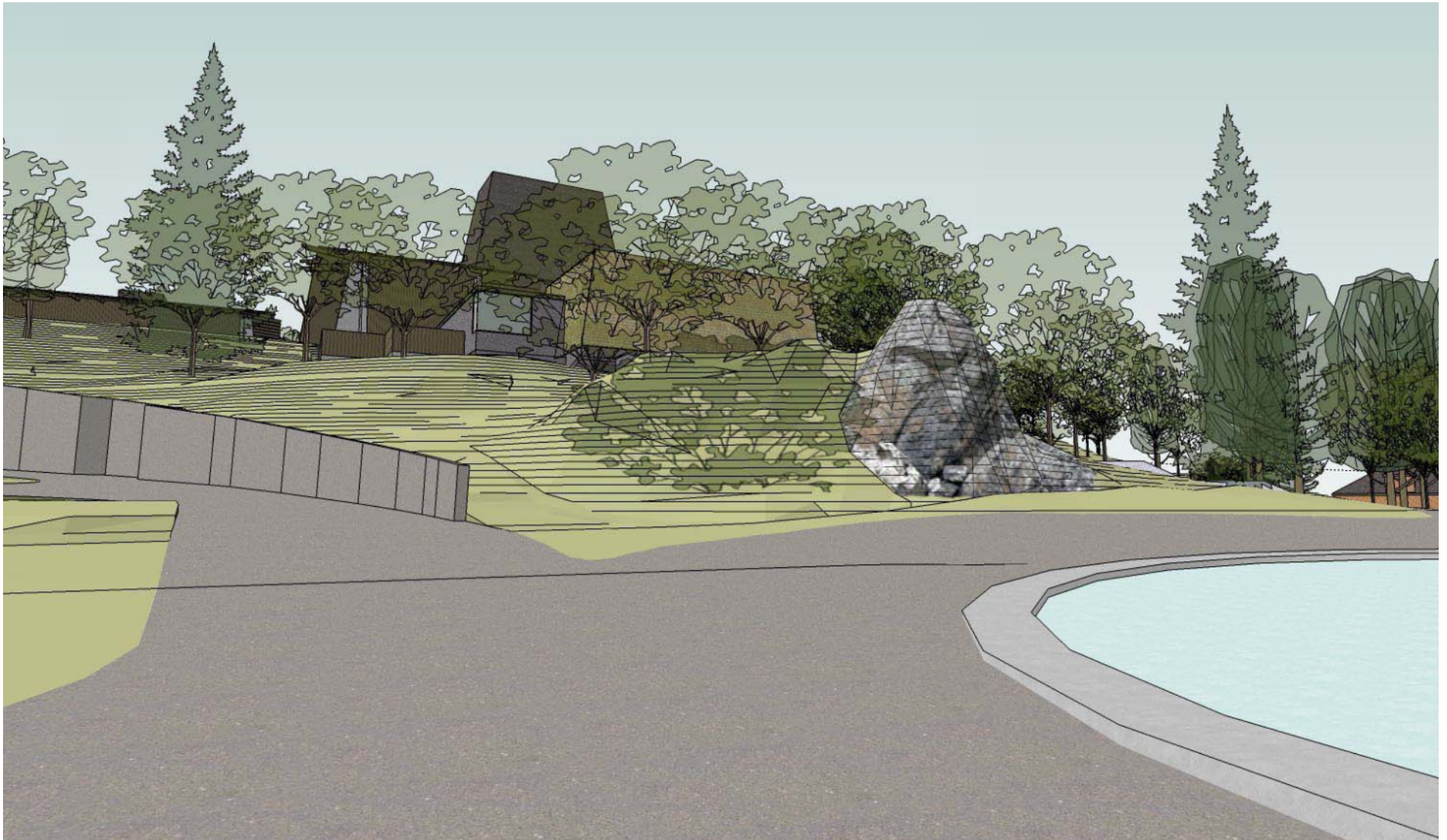
WRNSSTUDIO<sup>LLP</sup>

## Foothill College Fine Arts Scene Shop





## Foothill College Fine Arts Scene Shop



View from Entry Fountain

9 of 10

WRNSSTUDIO<sub>LLP</sub>



## Foothill College Fine Arts Scene Shop



Approach from Lot 1

10 of 10

WRNSSTUDIO<sub>LLP</sub>



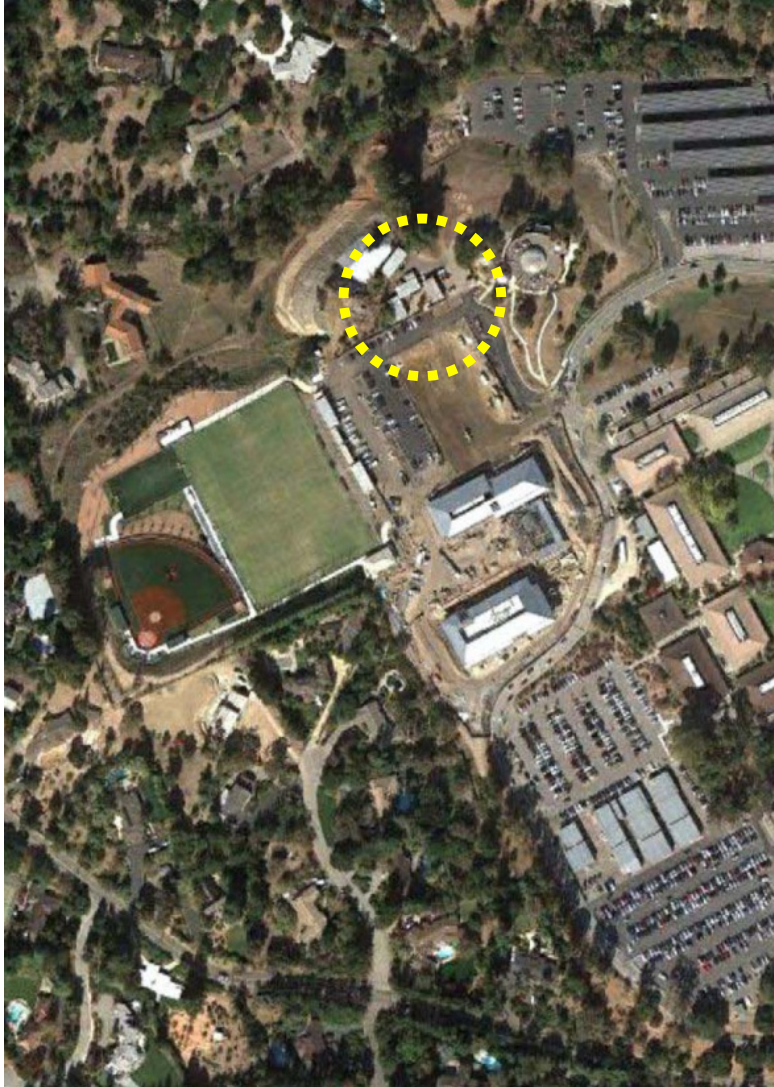


## **FOOTHILL COLLEGE PRINT SHOP AND PLANT SERVICES**

**Board of Trustees Presentation**

**August 6, 2012**

**RATCLIFF**



## **FOOTHILL COLLEGE PRINT SHOP AND PLANT SERVICES**

### **CLIENT**

- District Facilities & Operations
- Print Shop Staff

### **PROGRAM MANAGER**

- Gilbane/ MAAS

### **A/E TEAM**

- Ratcliff, Architectural
- CSW/ST2, Civil
- Meyer + Silberberg, Landscape
- Forrel/ Elsesser, Structural
- Gayner Engineers, MEP
- SFMI, IT/AV

**RATCLIFF**





## GOALS & OBJECTIVES

### PRINT SHOP

- Replace aged modular building in same location and maximize efficiency of operation

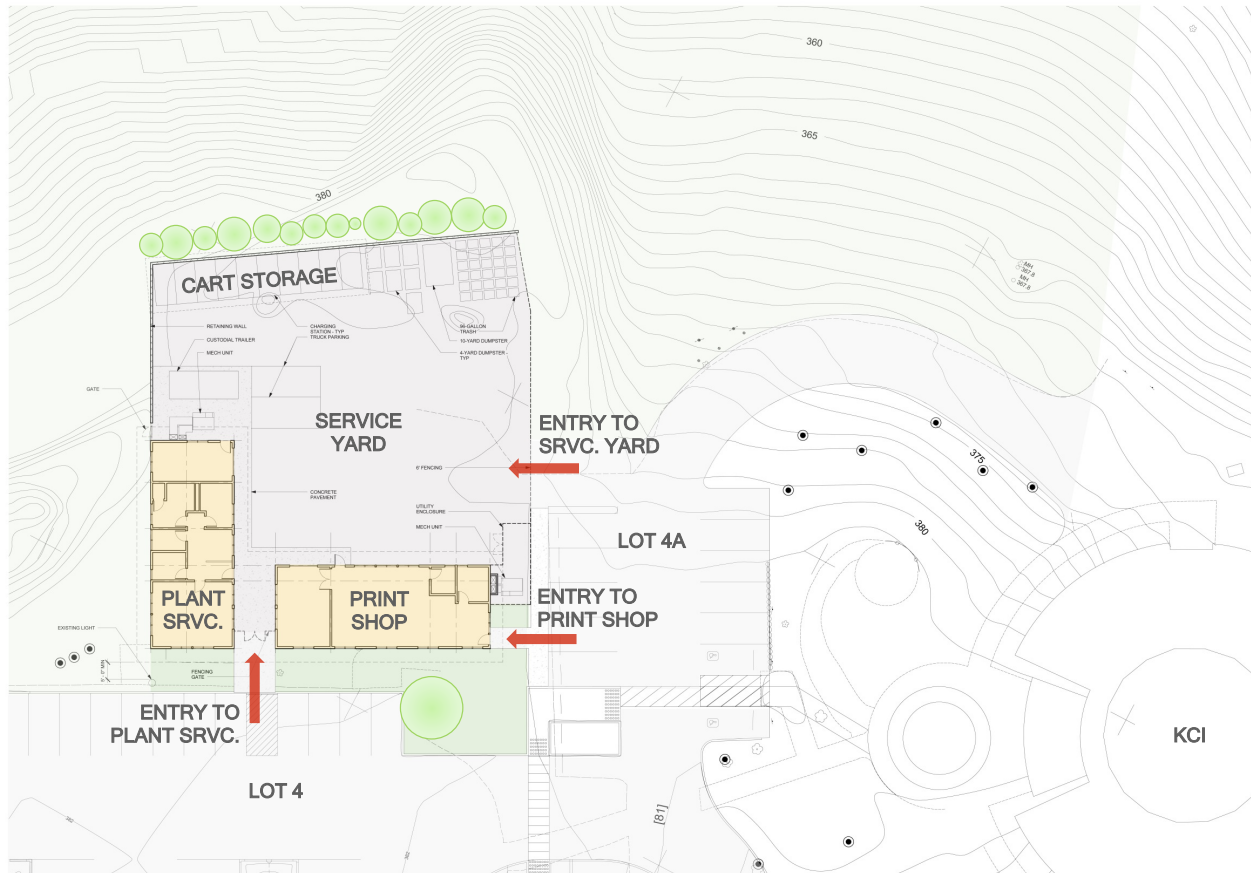
### PLANT SERVICES AND SERVICE YARD

- Replace aged modular building and provide a permanent “home” for custodial and grounds maintenance functions
- Provide a consolidated location for electric cart storage and waste and recycling operations, apart from the main campus

### DESIGN OBJECTIVES

- Achieve design continuity using the material palette established with the PSEC and field house projects
- Design simple buildings adaptable to campus or facilities use

RATCLIFF



## SITE PLAN

RATCLIFF



**Aerial View**

RATCLIFF





**Existing Print Shop**

RATCLIFF



**Existing Custodial  
& Grounds Office**

RATCLIFF